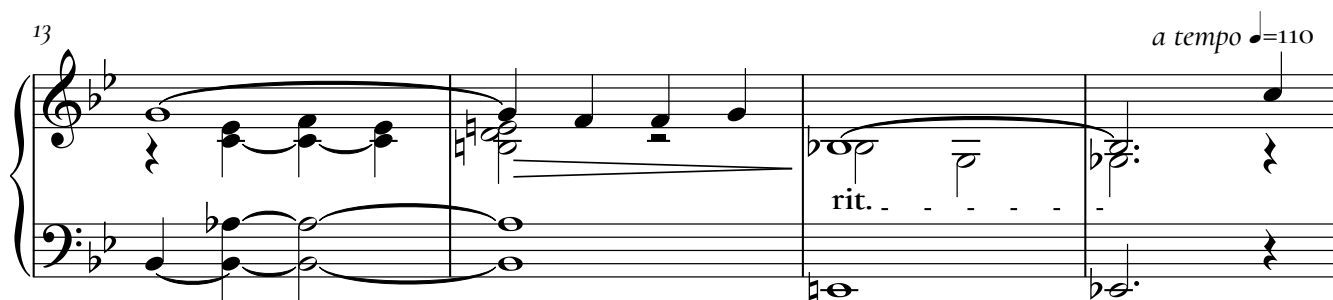
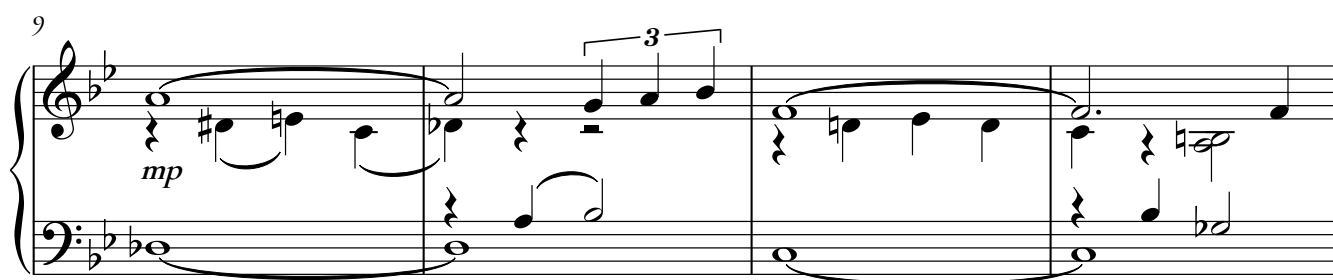
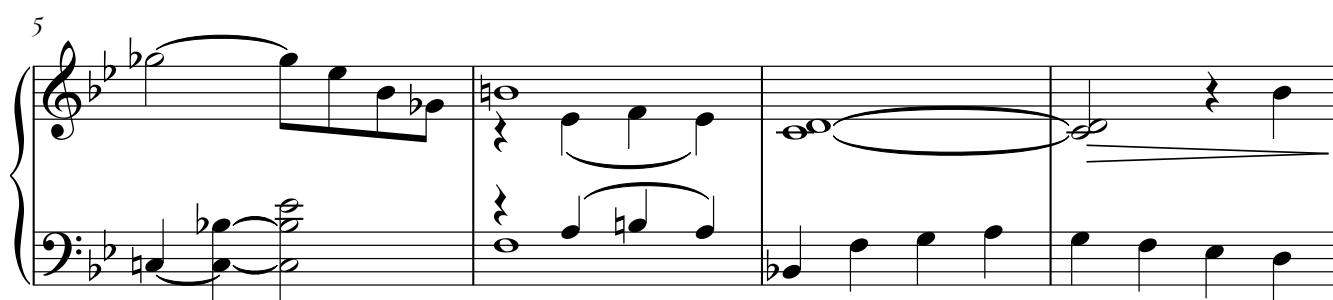
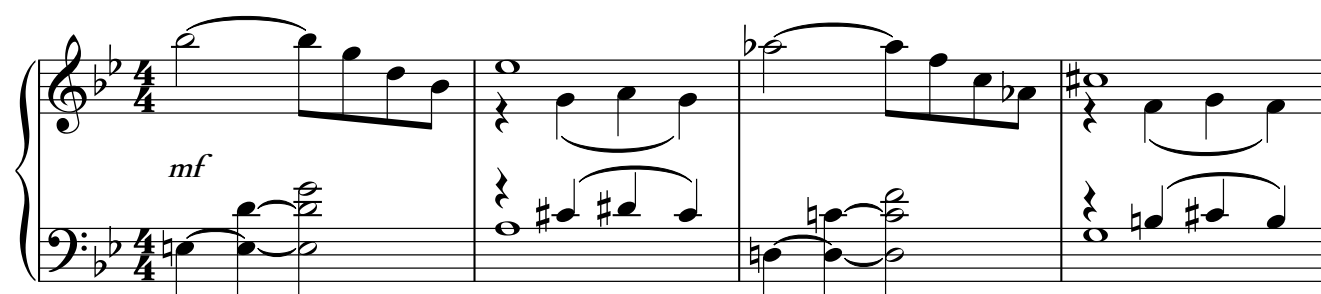


Stella By Starlight

opracowanie trudne

Muzyka: Victor Young
Aranżacja: Tomasz Białowolski

♩=110



21

Measures 21-24 of a musical score in B-flat major. Measure 21 starts with a forte (*f*) dynamic. The right hand features a triplet of eighth notes (F4, G4, A4) and a triplet of sixteenth notes (Bb4, A4, G4). The left hand has a triplet of eighth notes (F3, G3, A3). Measures 22-24 continue with various chordal textures and triplet patterns in both hands.

25

Measures 25-28 of a musical score. Measure 25 features a triplet of eighth notes in the right hand. Measures 26-28 show a progression of chords with some triplet patterns in the right hand.

29

Measures 29-32 of a musical score. Measure 29 has a long sustained chord in the right hand. Measure 30 has a *mf* dynamic marking. Measures 31-32 show a descending melodic line in the right hand and a steady eighth-note pattern in the left hand.

33

Measures 33-36 of a musical score. Measure 33 has a *mp* dynamic marking. Measures 34-36 show a descending melodic line in the right hand and a steady eighth-note pattern in the left hand.

37

Measures 37-40 of a musical score. Measure 37 has a *rit.* (ritardando) marking. Measures 38-40 show a descending melodic line in the right hand and a steady eighth-note pattern in the left hand.